

## STATISTICAL ANALYSIS OF VEGETATION DATA BY TWINSPAN

<sup>NB/</sup> Plot samples are in columns, species are in rows.  
 Entries in the tables are the pseudospecies levels not quantitative values.

### WHOLE SITE

No.	Species	Block					Spp group
		5	1	4	3	2	
7	<i>Deschampsia flexuosa</i>	2	1	-	-	-	00000
15	<i>Molinia caerulea</i>	2	2	1	-	-	00001
18	<i>Poa trivalis</i>	2	2	-	1	-	0001
1	<i>Agrostis canina</i>	1	2	2	-	1	001
24	<i>Brachythecium rutabulum</i>	-	1	1	-	1	010
3	<i>Anthoxanthum odoratum</i>	2	3	3	2	2	01100
13	<i>Lathyrus montanus</i>	2	2	1	1	1	011010
14	<i>Luzula multiflora</i>	2	2	2	2	1	011011
19	<i>Potentilla erecta</i>	2	2	2	2	1	011011
2	<i>Agrostis capillaris</i>	3	3	3	3	3	01110
9	<i>Festuca rubra</i>	3	3	3	3	2	01110
16	<i>Nardus stricta</i>	3	3	3	3	2	01110
22	<i>Trifolium repens</i>	2	2	2	2	2	01110
25	<i>Rhynchospora squarrosus</i>	2	2	2	2	2	01110
10	<i>Galium saxatile</i>	2	2	1	1	2	01111
4	<i>Carex binervis</i>	-	1	-	-	1	100
23	<i>Veronica chamaedrys</i>	-	1	-	-	1	100
11	<i>Holcus mollis</i>	1	2	2	2	2	10100
17	<i>Poa pratensis</i>	2	2	2	3	2	10101
6	<i>Deschampsia cespitosa</i>	1	-	1	1	1	10110
21	<i>Rumex acetosa</i>	1	1	-	1	1	10111
5	<i>Cirsium palustre</i>	1	1	-	1	2	11000
8	<i>Festuca ovina</i>	-	2	-	2	2	11001
20	<i>Ranunculus repens</i>	1	-	-	2	1	1101
12	<i>Juncus effusus</i>	-	-	-	1	1	111
	<b>Block group</b>	0	0	0	1	1	
		0	1	1	0	1	
			0	1			

**BLOCK 1**

No.	Species	Plot						Spp group
		1C	1A	1D	1E	1B	1F	
16	<i>Poa trivialis</i>	2	-	-	3	-	-	0000
20	<i>Veronica chamaedrys</i>	2	-	-	-	-	-	00010
5	<i>Cirsium palustre</i>	2	2	-	-	1	-	00011
7	<i>Festuca ovina</i>	1	2	2	2	1	-	00100
1	<i>Agrostis canina</i>	2	2	2	2	2	-	00101
9	<i>Galium saxatile</i>	2	2	2	2	2	1	0011
10	<i>Holcus mollis</i>	2	2	2	1	-	1	01000
19	<i>Trifolium repens</i>	3	2	2	2	1	2	010010
2	<i>Agrostis capillaris</i>	3	3	3	3	3	3	010011
8	<i>Festuca rubra</i>	3	3	3	2	3	3	010011
17	<i>Potentilla erecta</i>	2	2	2	2	2	2	010011
3	<i>Anthoxanthum odoratum</i>	3	2	3	3	3	2	010011
15	<i>Poa pratensis</i>	3	3	2	2	3	2	010011
22	<i>Rhynchospora squarrosus</i>	-	2	2	2	1	2	01010
14	<i>Nardus stricta</i>	2	-	3	3	3	3	01011
12	<i>Luzula multiflora</i>	-	2	2	1	2	1	0110
11	<i>Lathyrus montanus</i>	-	2	2	1	-	2	0111
18	<i>Rumex acetosa</i>	-	1	-	2	-	2	100
21	<i>Brachythecium rutabulum</i>	-	-	-	1	-	2	1010
6	<i>Deschampsia flexuosa</i>	-	-	-	-	-	2	1011
13	<i>Molinia caerulea</i>	-	-	-	-	-	3	1011
4	<i>Carex binervis</i>	-	-	-	-	1	1	11
	<b>Plot group</b>	0	0	0	0	0	1	
		0	1	1	1	1		
			0	0	1	1		
			0	1	0	1		

**BLOCK 2**

No.	SPECIES	Plot						Spp group
		2A	2E	2B	2C	2D	2F	
4	<i>Carex binervis</i>	-	-	-	-	-	2	0000
13	<i>Luzula multiflora</i>	2	-	-	-	2	1	0001
19	<i>Rumex acetosa</i>	1	1	-	-	-	2	0010
16	<i>Poa trivialis</i>	-	-	-	1	2	2	0011
14	<i>Nardus stricta</i>	2	3	2	2	2	3	0100
10	<i>Holcus mollis</i>	2	3	3	2	2	3	0101
23	<i>Rhynchospora squarrosa</i>	2	2	2	2	1	2	01100
2	<i>Agrostis capillaris</i>	3	3	3	3	3	3	01101
7	<i>Festuca ovina</i>	2	2	2	2	2	2	01101
20	<i>Trifolium repens</i>	2	2	2	2	2	2	01101
17	<i>Potentilla erecta</i>	2	2	2	1	1	1	011100
9	<i>Galium saxatile</i>	2	2	2	2	1	1	011100
15	<i>Poa pratensis</i>	3	2	3	3	3	2	011100
8	<i>Festuca rubra</i>	3	3	2	2	3	2	011101
5	<i>Cirsium palustre</i>	1	2	-	2	2	1	011101
3	<i>Anthoxanthum odoratum</i>	2	2	3	3	3	2	01111
11	<i>Juncus effusus</i>	-	1	-	-	1	-	1000
22	<i>Brachythecium rutabulum</i>	1	-	-	-	1	-	1001
12	<i>Lathyrus montanus</i>	2	1	-	-	-	-	1010
21	<i>Veronica chamaedrys</i>	2	-	-	-	-	-	1011
18	<i>Ranunculus repens</i>	-	-	2	-	2	-	110
6	<i>Deschampsia cespitosa</i>	-	-	2	-	-	-	1110
1	<i>Agrostis canina</i>	-	-	-	2	-	-	1111
	<b>Plot group</b>	0	0	0	0	0	1	
		0	0	1	1	1		
		0	1	0	0	1		
				0	1			

**BLOCK 3**

No.	Species	Plot						Spp group
		3C	3A	3E	3D	3B	3F	
16	<i>Ranunculus repens</i>	-	-	2	2	2	2	00
9	<i>Juncus effusus</i>	-	-	1	-	-	-	0100
4	<i>Deschampsia cespitosa</i>	-	-	-	-	2	-	0101
7	<i>Galium saxatile</i>	-	1	-	-	2	-	01100
15	<i>Potentilla erecta</i>	2	1	2	1	2	-	011010
10	<i>Lathyrus montanus</i>	2	-	2	2	-	-	011011
3	<i>Cirsium palustre</i>	1	1	1	-	-	-	01110
17	<i>Rumex acetosa</i>	2	2	-	-	-	-	01111
19	<i>Rhytidadelphus squarrosus</i>	2	2	-	1	2	1	1000
11	<i>Luzula multiflora</i>	1	2	2	2	2	1	100100
13	<i>Poa pratensis</i>	3	2	3	3	3	2	100101
1	<i>Agrostis capillaris</i>	3	3	3	3	3	3	100110
2	<i>Anthoxanthum odoratum</i>	3	2	2	2	2	2	100110
18	<i>Trifolium repens</i>	2	2	2	2	2	2	100110
12	<i>Nardus stricta</i>	3	2	3	3	3	3	100111
8	<i>Holcus mollis</i>	-	3	2	1	2	2	1010
6	<i>Festuca rubra</i>	2	3	2	2	2	3	1011
5	<i>Festuca ovina</i>	2	-	-	-	-	2	110
14	<i>Poa trivalis</i>	-	-	-	-	-	2	111
	<b>Plot group</b>	0	0	0	0	0	1	
		0	0	1	1	1		
		0	1	0	0	1		
				0	1			

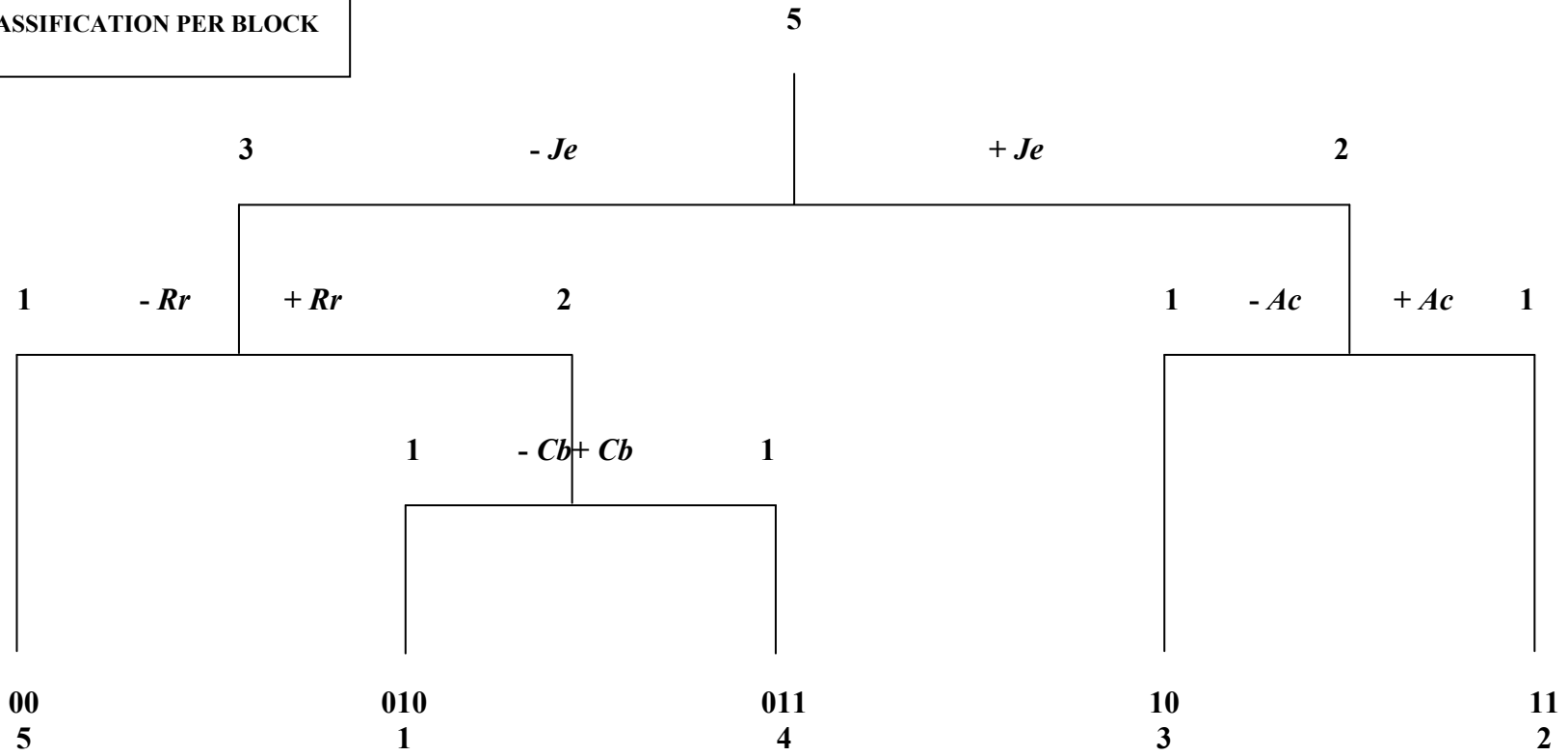
**BLOCK 4**

No.	Species	Plot						Spp group
		4F	4E	4A	4B	4C	4D	
15	<i>Brachythecium rutabulum</i>	-	-	-	1	-	-	0000
1	<i>Agrostis canina</i>	-	-	-	2	2	-	0001
6	<i>Galium saxatile</i>	-	1	2	2	2	-	0010
16	<i>Rhynchospora squarrosa</i>	-	1	2	2	1	-	0011
10	<i>Molinia caerulea</i>	2	-	-	-	-	-	010
14	<i>Trifolium repens</i>	2	-	2	2	-	-	011
3	<i>Anthoxanthum odoratum</i>	3	3	2	3	2	3	1000
5	<i>Festuca rubra</i>	3	3	3	3	2	3	1001
12	<i>Poa pratensis</i>	2	2	2	2	1	2	1001
2	<i>Agrostis capillaris</i>	3	3	3	3	3	3	1010
13	<i>Potentilla erecta</i>	2	2	2	2	2	2	1010
11	<i>Nardus stricta</i>	2	3	3	3	3	2	1011
7	<i>Holcus mollis</i>	-	-	2	-	2	2	1100
9	<i>Luzula multiflora</i>	-	-	-	1	2	2	1101
4	<i>Deschampsia cespitosa</i>	-	-	-	-	-	2	111
8	<i>Lathyrus montanus</i>	-	-	-	-	-	2	111
	<b>Plot group</b>	0	0	0	0	0	1	
		0	0	1	1	1		
		0	1	0	1	1		
					0	1		

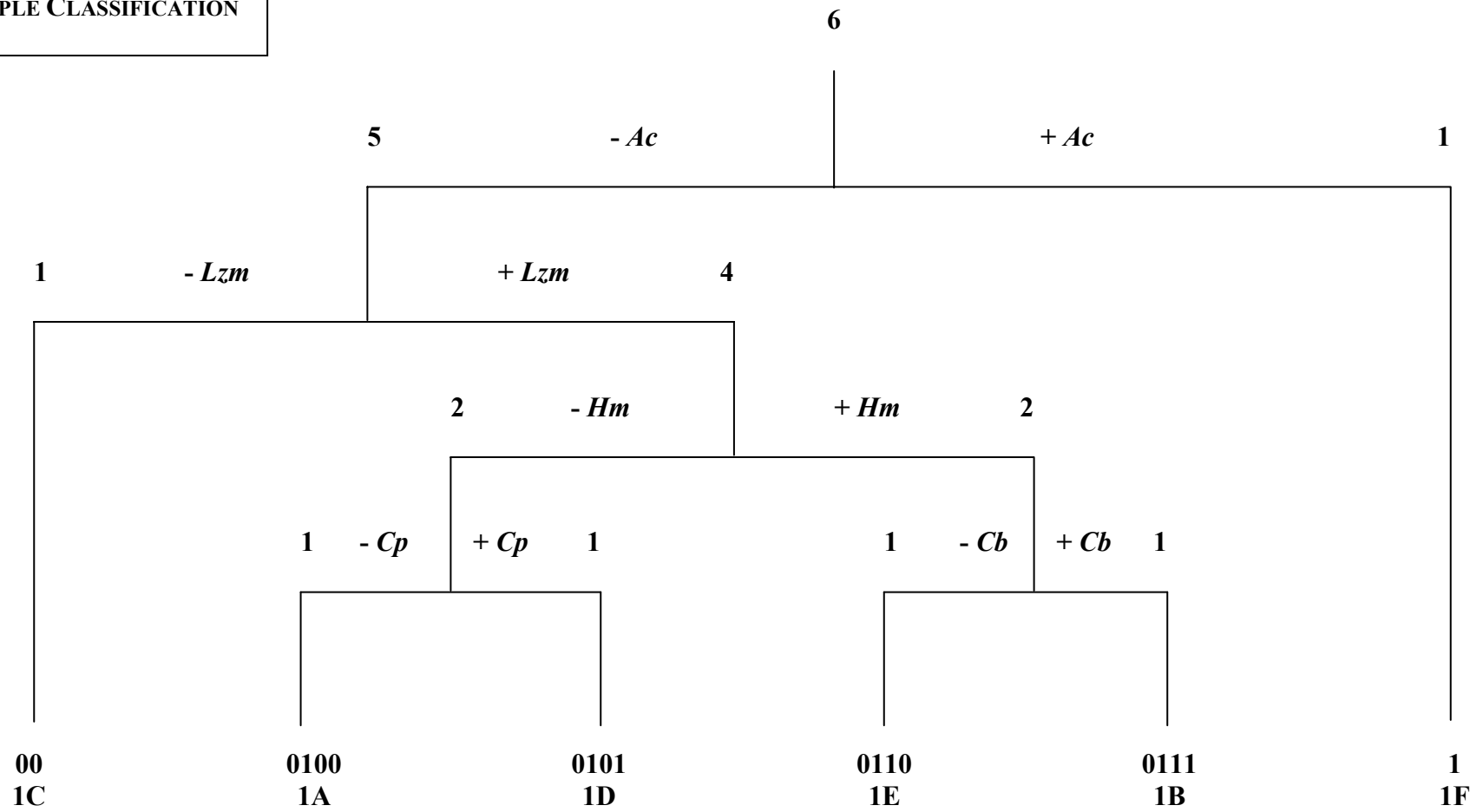
**BLOCK 5**

No.	Species	Plot						Spp group
		5B	5A	5C	5D	5E	5F	
4	<i>Cirsium palustre</i>	-	-	1	-	-	-	0000
1	<i>Agrostis canina</i>	-	2	2	-	-	-	0001
11	<i>Luzula multiflora</i>	2	2	2	-	-	-	0010
20	<i>Rhynchospora squarrosa</i>	2	2	2	-	-	-	0010
8	<i>Galium saxatile</i>	2	2	-	-	-	-	0011
10	<i>Lathyrus montanus</i>	2	1	-	2	-	-	010
16	<i>Potentilla erecta</i>	2	2	1	2	1	-	0110
19	<i>Trifolium repens</i>	2	2	2	2	1	2	01110
3	<i>Anthoxanthum odoratum</i>	2	3	3	3	2	3	01111
2	<i>Agrostis capillaris</i>	3	3	3	3	3	3	1000
7	<i>Festuca rubra</i>	3	3	3	3	3	3	1000
14	<i>Poa pratensis</i>	2	2	2	2	2	2	1000
13	<i>Nardus stricta</i>	3	2	2	2	3	2	1001
15	<i>Poa trivialis</i>	2	-	2	2	2	2	101
12	<i>Molinia caerulea</i>	-	2	-	-	2	2	110
18	<i>Rumex acetosa</i>	-	-	-	-	2	-	111000
5	<i>Deschampsia cespitosa</i>	-	-	-	-	-	2	111001
9	<i>Holcus mollis</i>	-	-	-	-	2	2	111001
6	<i>Deschampsia flexuosa</i>	-	-	-	3	2	2	11101
17	<i>Ranunculus repens</i>	-	-	-	2	-	-	1111
	<b>Plot group</b>	0	0	0	1	1	1	
		0	1	1	0	1	1	
			0	1		0	1	

**WHOLE SITE  
SAMPLE CLASSIFICATION PER BLOCK**

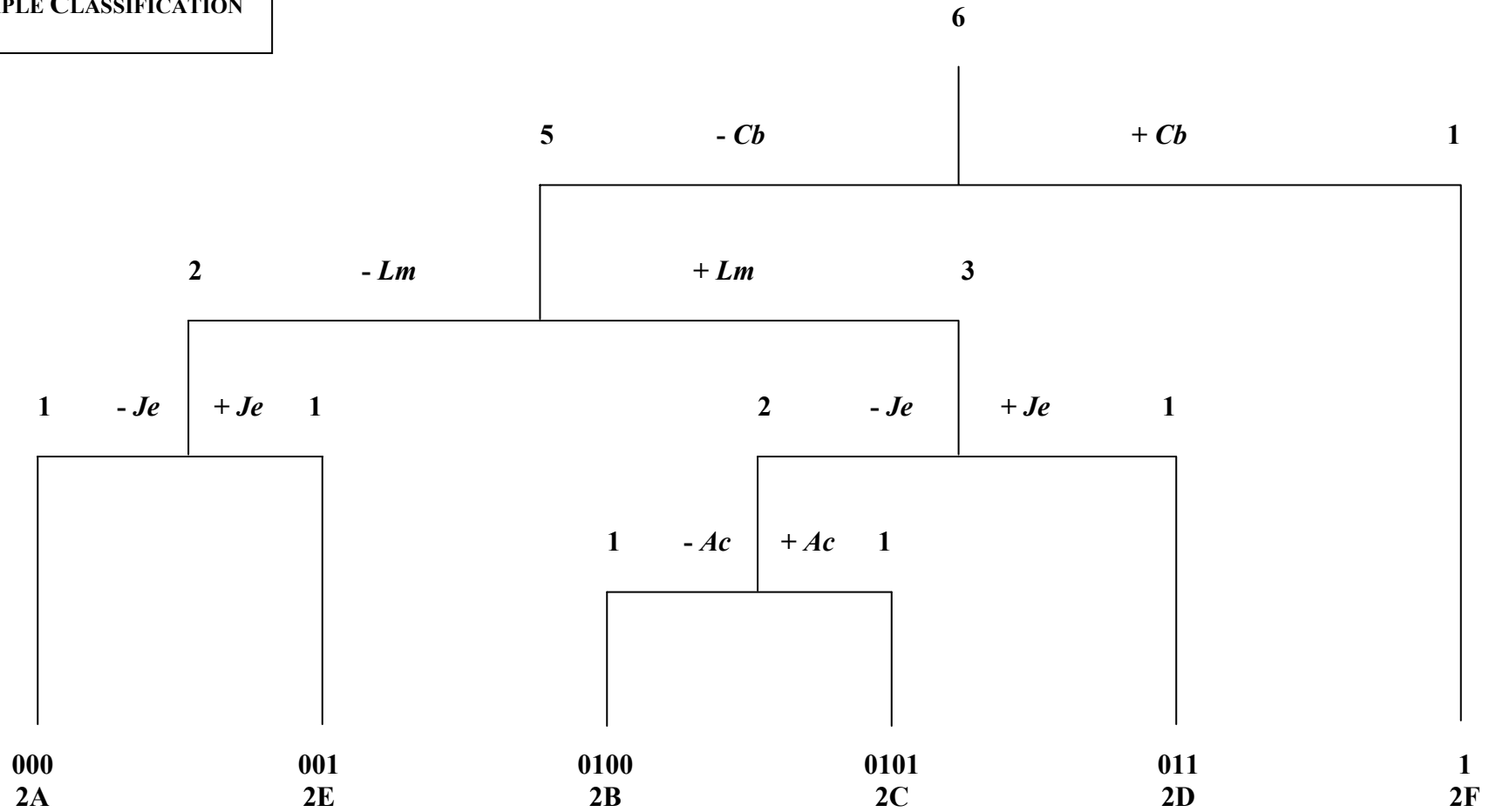


**BLOCK 1**  
**SAMPLE CLASSIFICATION**

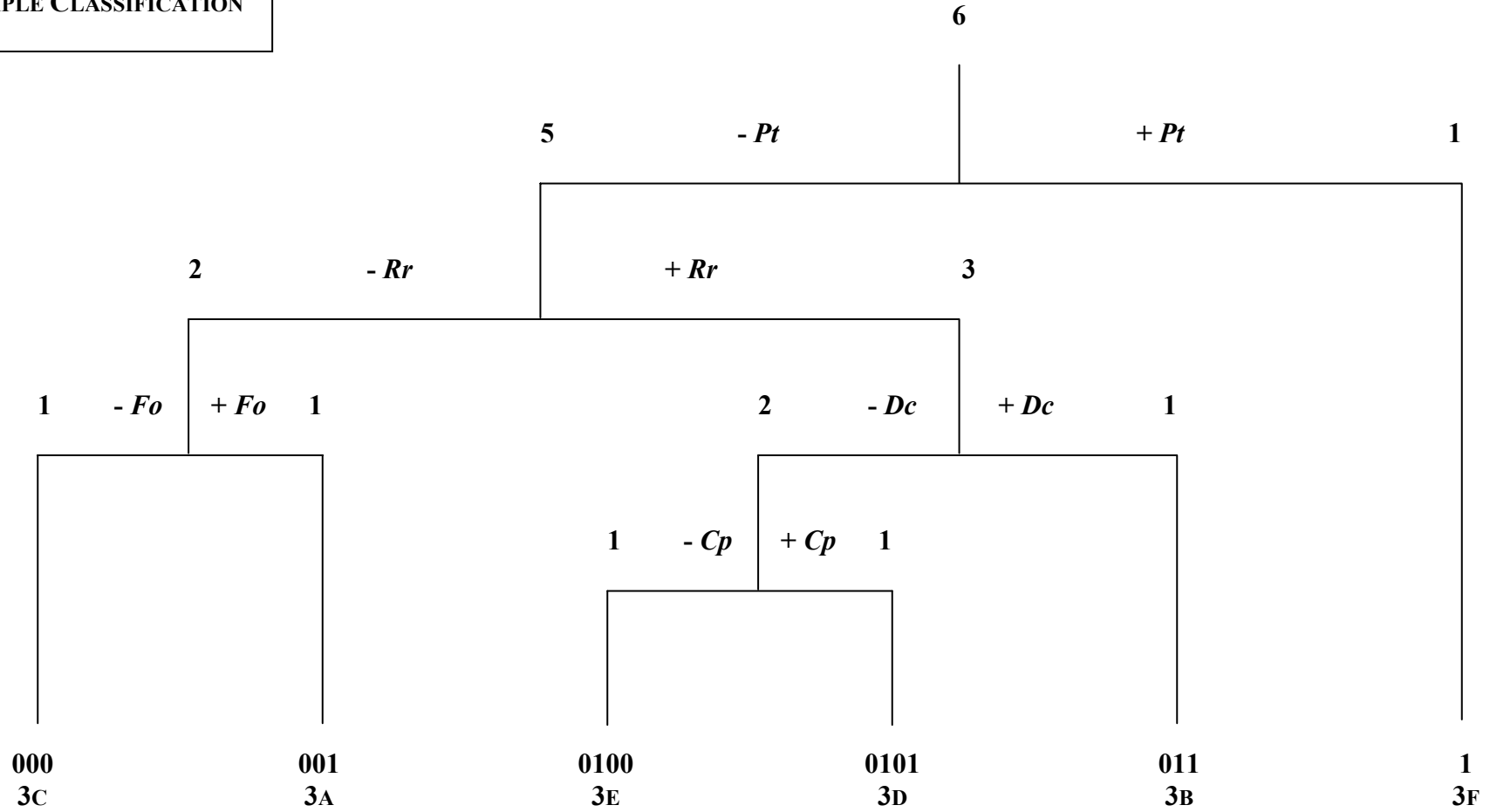




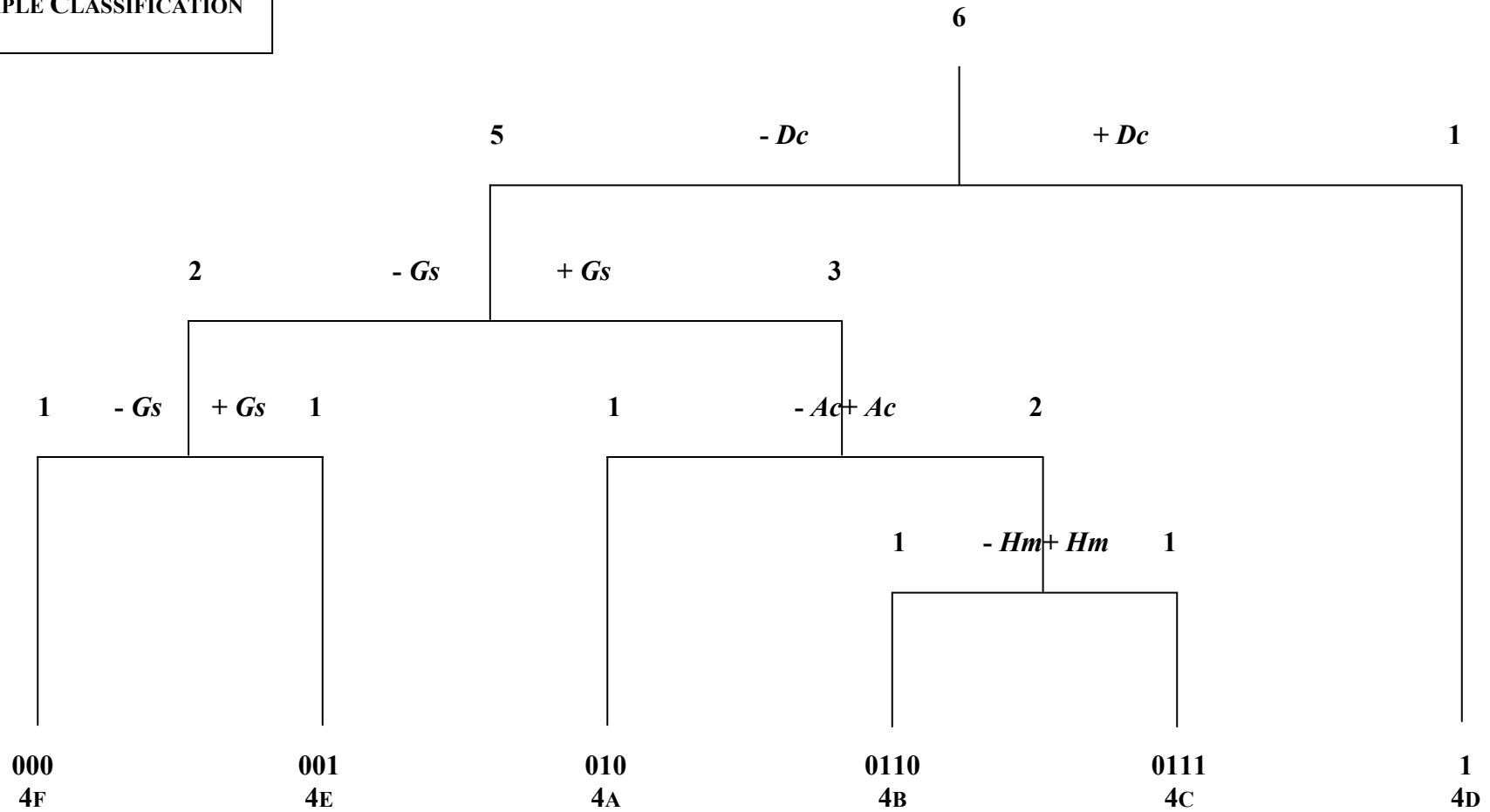
**BLOCK 2**  
**SAMPLE CLASSIFICATION**



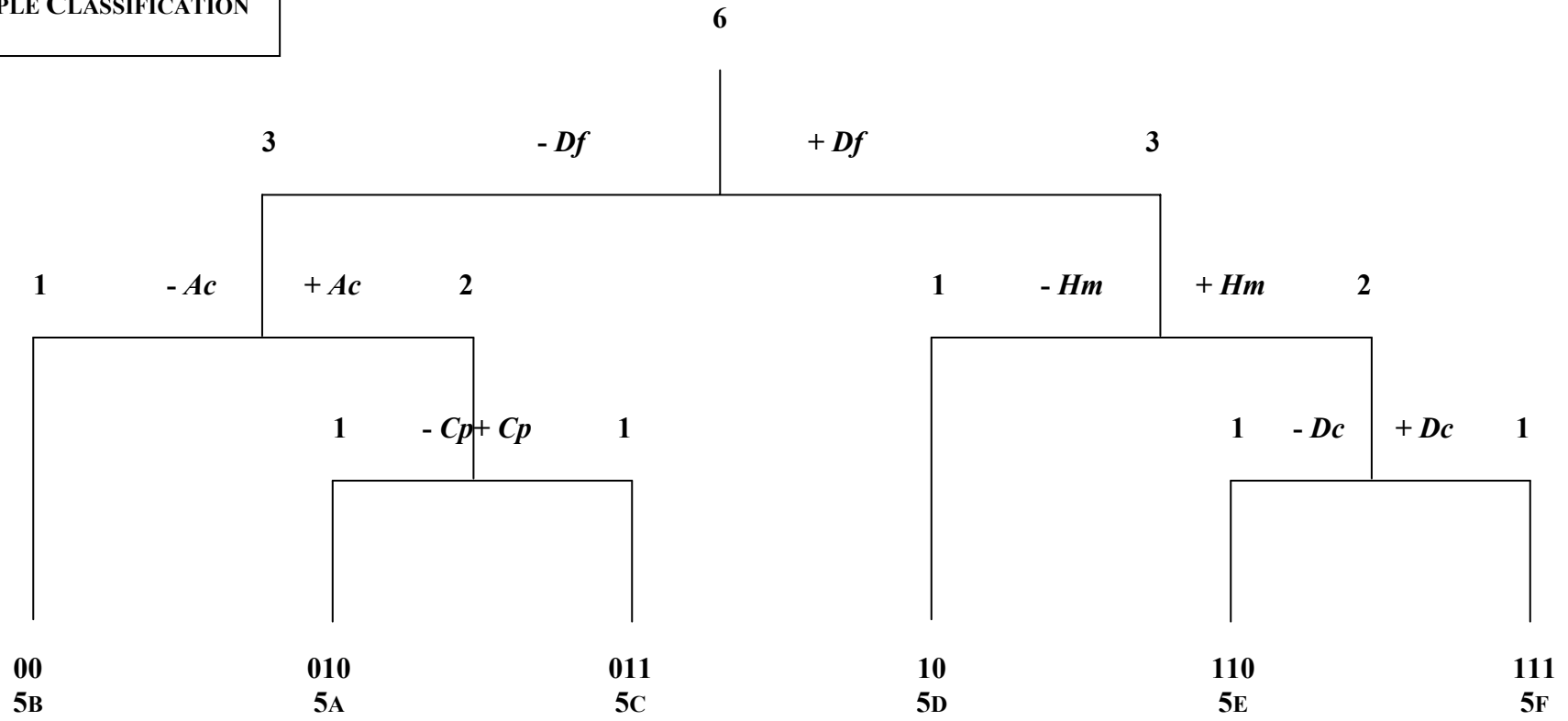
**BLOCK 3**  
**SAMPLE CLASSIFICATION**



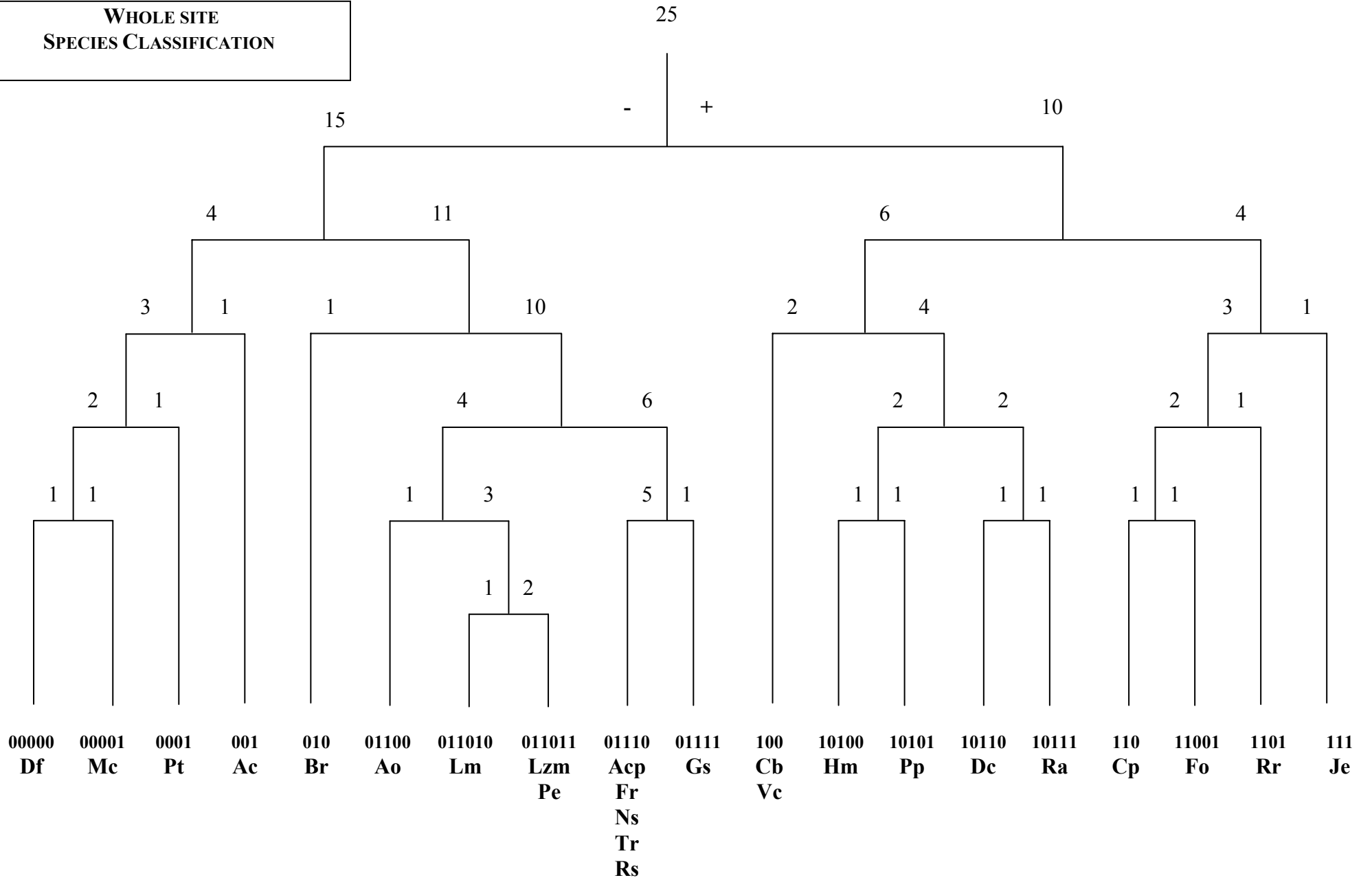
**BLOCK 4**  
**SAMPLE CLASSIFICATION**



**BLOCK 5**  
**SAMPLE CLASSIFICATION**

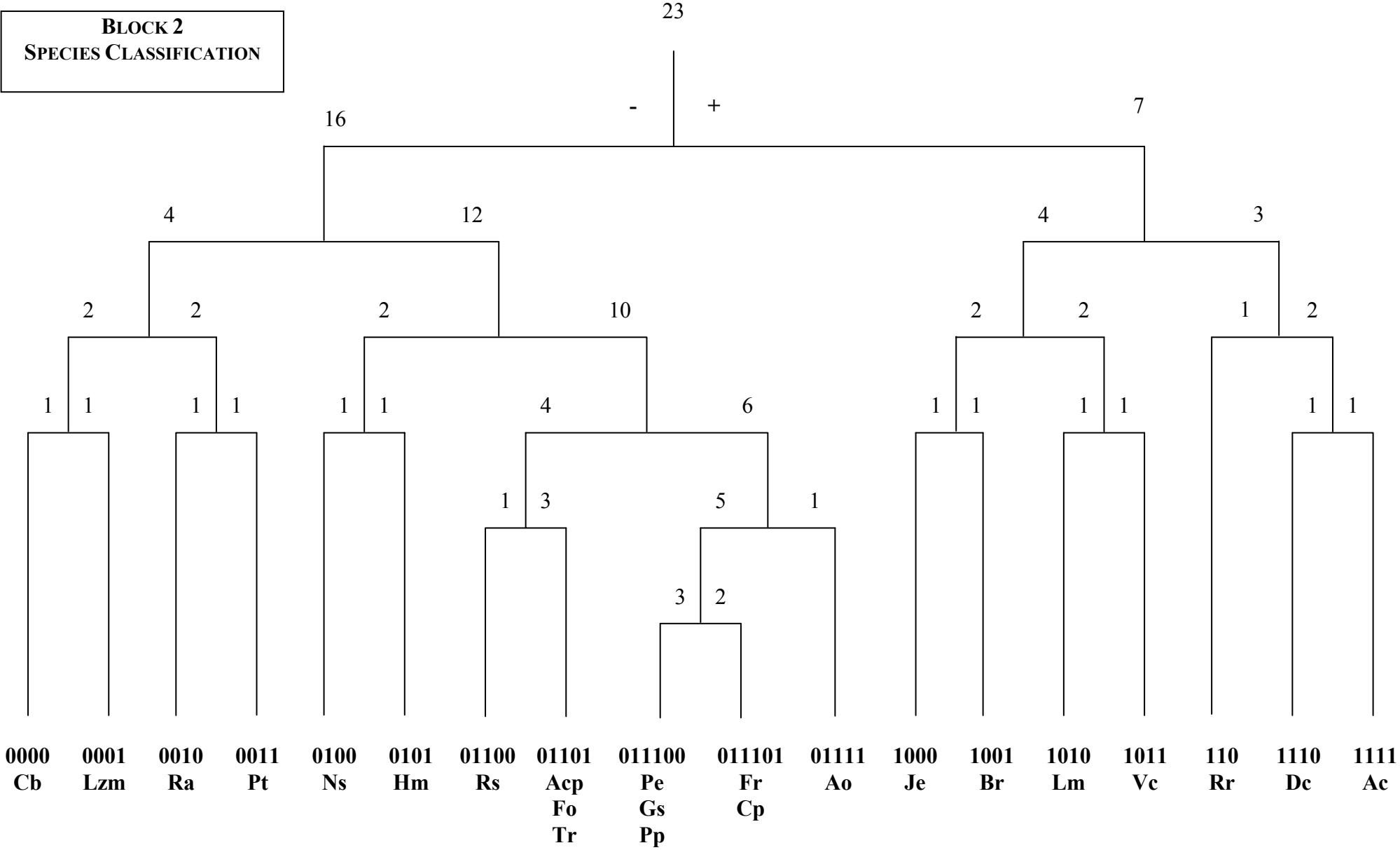


**WHOLE SITE  
SPECIES CLASSIFICATION**

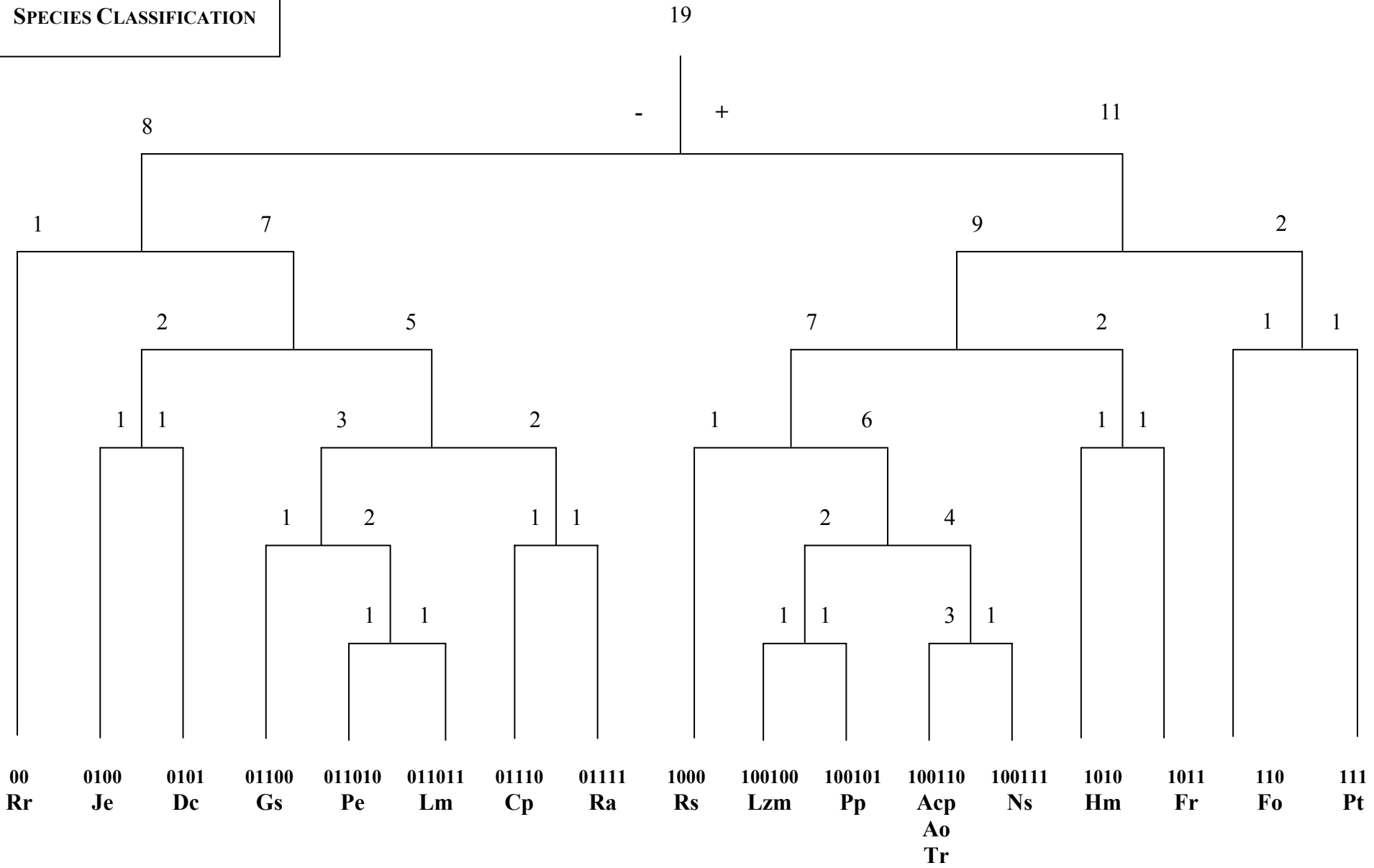




**BLOCK 2**  
**SPECIES CLASSIFICATION**

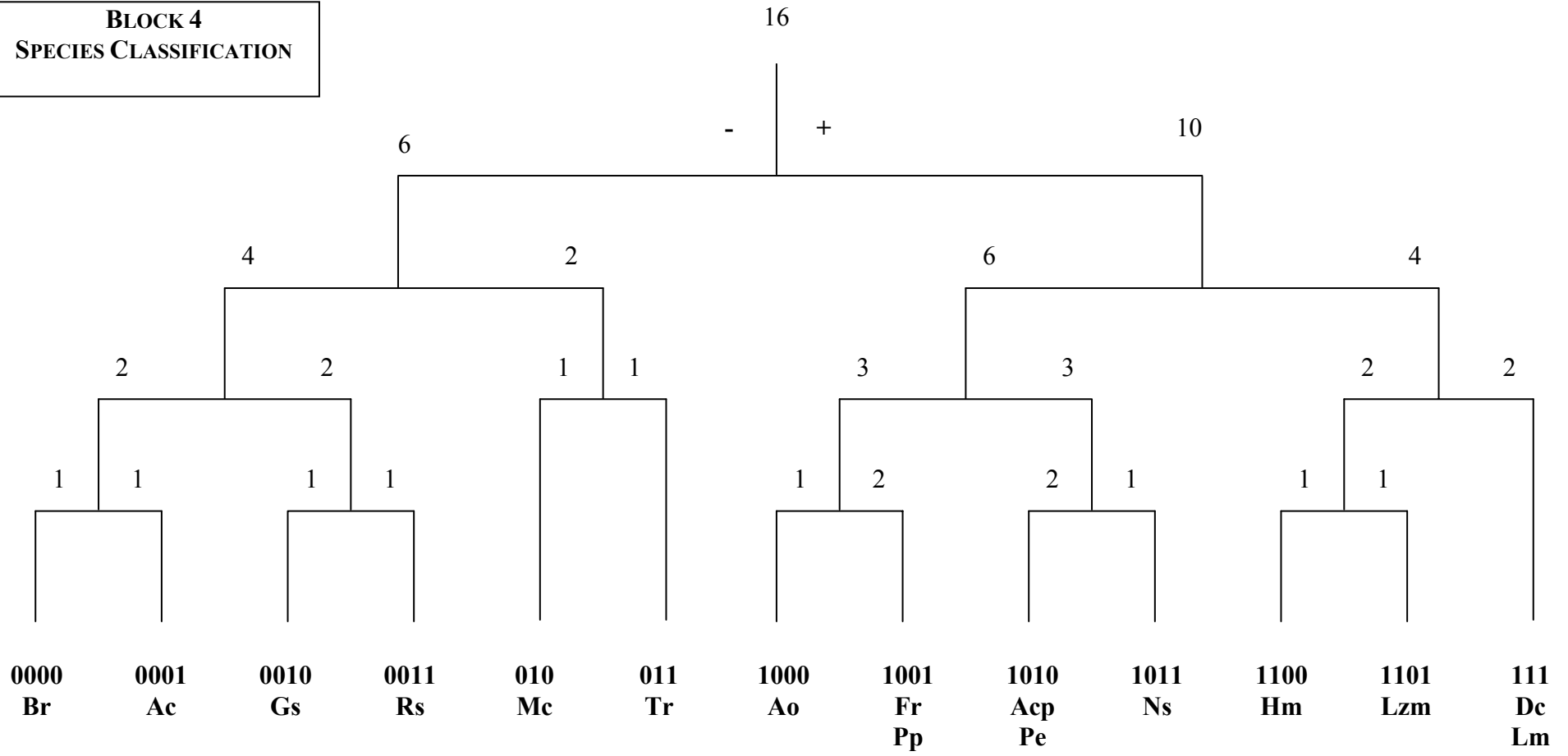


**BLOCK 3**  
**SPECIES CLASSIFICATION**





**BLOCK 4**  
**SPECIES CLASSIFICATION**



**BLOCK 5**  
**SPECIES CLASSIFICATION**

